

# Solar Powered Industrial Wall Fan



## Catalogue

- Production Description
- Specifications
- Application
- Warranty
- Contact



Sunny International Power Ltd  
Email: [sales@sunnyintlpowerltd.com](mailto:sales@sunnyintlpowerltd.com)  
Website: [www.sunnyintlpowerltd.com](http://www.sunnyintlpowerltd.com)  
[www.sipl.en.Alibaba.com](http://www.sipl.en.Alibaba.com)

## Features:

- Direct drive, No belt pulley
- No maintenance, No electricity bill
- Get product cost refund within 3 years
- 1/2 energy consumption than normal fan
- 36V low voltage input / output for better safety
- Easy-operate pure DC solar system without inverting
- Strong fan heart, the unique waterproof DC brushless motor
- Smart controller switch backup energy in when sunlight is weak

Get your bill paid by free solar energy within 3 years

New Type Solar Powered Air Exhaust Fans

Blades	Product Cost (USD)	Product Cost + Annual Electricity Costs (USD)		
		1 <sup>st</sup> year	2 <sup>nd</sup> year	3 <sup>rd</sup> year
810	\$756	\$756	\$756	\$756
950	\$828	\$828	\$828	\$828
1110	\$888	\$888	\$888	\$888

VS

Regular Electricity Consumed Ventilators

Blades	Product Cost (USD)	Product Cost + Annual Electricity Costs (USD)		
		1 <sup>st</sup> year	2 <sup>nd</sup> year	3 <sup>rd</sup> year
810	\$115	\$268.56	\$426.57	\$584.58
950	\$147	\$381.31	\$616.19	\$851.07
1110	\$176	\$484.74	\$805.03	\$1125.31

# SN2013020 dia. 810mm

## <Solar panel direct>

- 0.9x0.9m large size with powerful winding ability
- Powered by 250W solar panel at day;
- ½ energy consumption than normal fan
- 0 pay for electricity



## Specifications

Power	250W 36V solar DC power
Solar Panel	Polycrystalline solar panel, 1640x993x50mm
Blades	Dia 810mm fan blades, 6 pcs
Motor	Brushless DC Motor, IP68
Host Size	900x900x400mm
Housing	Galvanized steel
Color	Silver
Installation	Wall mounting
Working Efficiency	Up to 20,000CMH
Power Mode	Powered by solar panel at day
Packing/loading	1 set/2 wooden cases/0.68cbm (50 sets/20'GP; 100 sets/40'GP)

# SN2015018 dia. 810mm

## <Solar panel + adapter>

- 0.9x0.9m large size with powerful winding ability
- Powered by 250W solar panel at day;
- Keep running powerfully even with power supply's backup by controller's auto switch even when it's cloudy;
- Continue working at night with energy cost no more than 250W from AC grid;
- ½ energy consumption than normal fan



Meanwell power supply



Controller

## Specifications

Solar Panel	250W 36V solar DC power+ DC36V back up power
Blades	Polycrystalline solar panel, 1640x993x50mm
Motor	Dia 810mm fan blades, 6 pcs
Host Size	Brushless DC Motor, IP68
Housing	900x900x400mm
Color	Galvanized steel
Installation	Silver
Working Efficiency	Wall mounting
Controller	Up to 20,000CMH
Back-up Power Supply	The smart controller keeps monitoring the output of solar panel and switches in the back-up power to assist automatically, which makes sure the fan working powerfully but not any solar energy wasted.
Power Mode	Transfer high volt AC power to 36V low volt DC power to back-up the fan working when it's cloudy or at night
Packing/loading	Fan powered by solar panel at day; Keep fast even when cloudy with assistant power from AC grid; Continue working at night with energy cost no more than 250W from AC grid;
	1 set/2 wooden cases/0.68cbm (50 sets/20'GP; 100 sets/40'GP)

# SN2015019 dia. 810mm

## <Solar panel + battery>

- 0.9x0.9 large size with powerful winding ability
- 1 piece of 250W solar panel powers fan while the other 2 pieces of 230W solar panels charge battery at day;
- Keep running powerfully even with battery's backup by controller's auto switch even when it's cloudy;
- Continue working at night powered by 3x80Ah OPZV battery;
- Totally 0 pay for electricity



OPZV battery

Controller

## Specifications

Power	250W 36V solar DC power+ battery back up power
Solar Panel	Polycrystalline solar panel, 1640x993x50mm
Blades	Dia 810mm fan blades, 6 pcs
Motor	Brushless DC Motor, IP68
Host Size	900x900x400mm
Housing	Galvanized steel
Color	Silver
Installation	Wall mounting
Working Efficiency	Up to 20,000CMH
Controller	The smart controller keeps monitoring the output of solar panel and switches in the back-up power to assist automatically, which makes sure the fan working powerfully but not any solar energy wasted.
Back-up Battery	3*80Ah OPZV battery
Power Mode	Fan powered by 250W solar panel at day while battery charged by 2 pcs 230W solar panel; Keep fast even when cloudy with assistant power from battery; Continue working at night powered by battery;
Packing/loading	1 set/2 wooden cases/0.68cbm (40 sets/20'GP; 80 sets/40'GP)

# SN2013021 dia. 950mm

## <Solar panel direct>

- 1.0x1.0m large size with powerful winding ability
- Powered by 300W solar panel at day;
- ½ energy consumption than normal fan
- 0 pay for electricity



## Specifications

Power	300W 36V solar DC power
Solar Panel	Polycrystalline solar panel, 1956x992x50mm
Blades	Dia 950mm fan blades, 6 pcs
Motor	Brushless DC Motor, IP68
Host Size	1060x1060x400mm
Housing	Galvanized steel
Color	Silver
Installation	Wall mounting
Working Efficiency	Up to 26,000CMH
Power Mode	Powered by solar panel at day
Packing/loading	1 set/2 wooden cases/0.88cbm (40 sets/20'GP; 80 sets/40'GP)

# SN2015020 dia. 950mm

## <Solar panel + adapter>

- 1.0x1.0m large size with powerful winding ability
- Powered by 300W solar panel at day;
- Keep running powerfully even with power supply's backup by controller's auto switch even when it's cloudy;
- Continue working at night with energy cost no more than 300W from AC grid;
- ½ energy consumption than normal fan



Meanwell power supply



Controller

## Specifications

Power	300W 36V solar DC power+ DC36V back up power
Solar Panel	Polycrystalline solar panel, 1956x992x50mm
Blades	Dia 950mm fan blades, 6 pcs
Motor	Brushless DC Motor, IP68
Host Size	1060x1060x400mm
Housing	Galvanized steel
Color	Silver
Installation	Wall mounting
Working Efficiency	Up to 26,000CMH
Controller	The smart controller keeps monitoring the output of solar panel and switches in the back-up power to assist automatically, which makes sure the fan working powerfully but not any solar energy wasted.
Back-up Power Supply	Transfer high volt AC power to 36V low volt DC power to back-up the fan working when it's cloudy or at night
Power Mode	Fan powered by solar panel at day; Keep fast even when cloudy with assistant power from AC grid; Continue working at night with energy cost no more than 300W from AC grid;
Packing/loading	1 set/2 wooden cases/0.89cbm (40 sets/20'GP; 80 sets/40'GP)

# SN2015021 dia. 950mm

## <Solar panel + battery>

- 1.0x1.0 large size with powerful winding ability
- 1 piece of 300W solar panel powers fan while the other 2 pieces of 230W solar panels charge battery at day;
- Keep running powerfully even with battery's backup by controller's auto switch even when it's cloudy;
- Continue working at night powered by 3x100Ah OPZV battery;
- Totally 0 pay for electricity



## Specifications

Power	300W 36V solar DC power+ battery back up power
Solar Panel	Polycrystalline solar panel, 1956x992x50mm
Blades	Dia 950mm fan blades, 6 pcs
Motor	Brushless DC Motor, IP68
Host Size	1060x1060x400mm
Housing	Galvanized steel
Color	Silver
Installation	Wall mounting
Working Efficiency	Up to 26,000CMH
Controller	The smart controller keeps monitoring the output of solar panel and switches in the back-up power to assist automatically, which makes sure the fan working powerfully but not any solar energy wasted.
Back-up Battery	3*100Ah OPZV battery
Power Mode	Fan powered by 300W solar panel at day while battery charged by 2 pcs 230W solar panel; Keep fast even when cloudy with assistant power from battery; Continue working at night powered by battery;
Packing/loading	1 set/2 wooden cases/1.32cbm (35 sets/20'GP; 70 sets/40'GP)



# SN2013022 dia. 1110mm

## <Solar panel direct>

- 1.2x1.2m large size with powerful winding ability
- Powered by 350W solar panel at day;
- ½ energy consumption than normal fan
- 0 pay for electricity



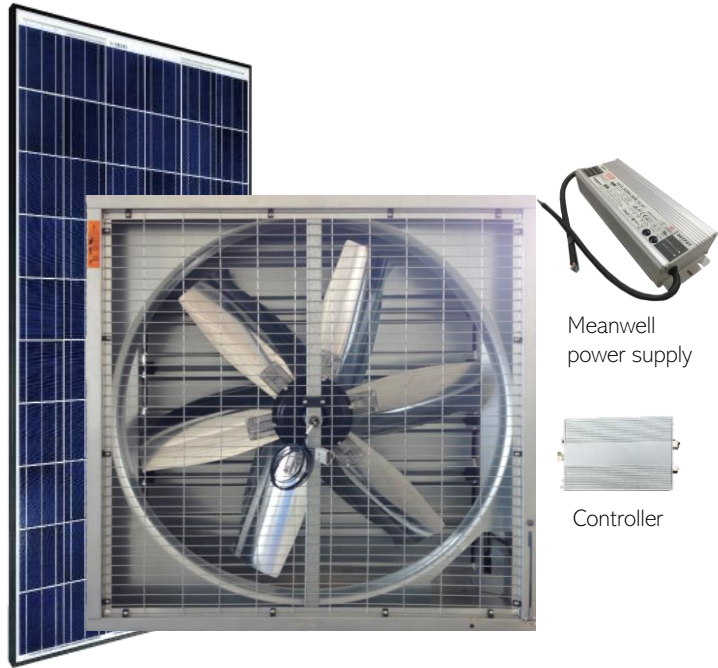
## Specifications

Power	350W 36V solar DC power
Solar Panel	Polycrystalline solar panel, 1956x992x50mm
Blades	Dia 1110mm fan blades, 6 pcs
Motor	Brushless DC Motor, IP68
Host Size	1220x1220x400mm
Housing	Galvanized steel
Color	Silver
Installation	Wall mounting
Working Efficiency	Up to 29,500CMH
Power Mode	Powered by solar panel at day
Packing/loading	1 set/2 wooden cases/1.05cbm (35 sets/20'GP; 70 sets/40'GP)

# SN2016011 dia. 1110mm

## <Solar panel + adapter>

- 1.2x1.2m large size with powerful winding ability
- Powered by 350W solar panel at day;
- Keep running powerfully even with power supply's backup by controller's auto switch even when it's cloudy;
- Continue working at night with energy cost no more than 320W from AC grid;
- ½ energy consumption than normal fan



## Specifications

Power	350W 36V solar DC power+ DC36V back up power
Solar Panel	Polycrystalline solar panel, 1956x992x50mm
Blades	Dia 1110mm fan blades, 6 pcs
Motor	Brushless DC Motor, IP68
Host Size	1220x1220x400mm
Housing	Galvanized steel
Color	Silver
Installation	Wall mounting
Working Efficiency	Up to 29,500CMH
Controller	The smart controller keeps monitoring the output of solar panel and switches in the back-up power to assist automatically, which makes sure the fan working powerfully but not any solar energy wasted.
Back-up Power Supply	Transfer high volt AC power to 36V low volt DC power to back-up the fan working when it's cloudy or at night
Power Mode	Fan powered by solar panel at day; Keep fast even when cloudy with assistant power from AC grid; Continue working at night with energy cost no more than 320W from AC grid;
Packing/loading	1 set/2 wooden cases/1.06cbm (35 sets/20'GP; 70 sets/40'GP)

# SN2016037 dia. 1110mm

## <Solar panel + battery>

- 1.2x1.2 large size with powerful winding ability
- 1 piece of 350W solar panel powers fan while the other 2 pieces of 230W solar panels charge battery at day;
- Keep running powerfully even with battery's backup by controller's auto switch even when it's cloudy;
- Continue working at night powered by 3x120Ah OPZV battery;
- Totally 0 pay for electricity



OPZV battery

Controller

## Specifications

Power	350W 36V solar DC power+ battery back up power
Solar Panel	Polycrystalline solar panel, 1956x992x50mm
Blades	Dia 1110mm fan blades, 6 pcs
Motor	Brushless DC Motor, IP68
Host Size	1220x1220x400mm
Housing	Galvanized steel
Color	Silver
Installation	Wall mounting
Working Efficiency	Up to 29,500CMH
Controller	The smart controller keeps monitoring the output of solar panel and switches in the back-up power to assist automatically, which makes sure the fan working powerfully but not any solar energy wasted.
Back-up Battery	3*120Ah OPZV battery
Power Mode	Fan powered by 350W solar panel at day while battery charged by 2 pcs 230W solar panel; Keep fast even when cloudy with assistant power from battery; Continue working at night powered by battery;
Packing/loading	1 set/2 wooden cases/1.49cbm (28 sets/20'GP; 60 sets/40'GP)

# Application

Industrial Plant, Commercial building  
Agricultural Green House,  
Animal Breeding House, Livestock  
Feeding Shed...



With anti-rust fan housing and **waterproof motor**, the fan is suitable for any other big area you can imagine!

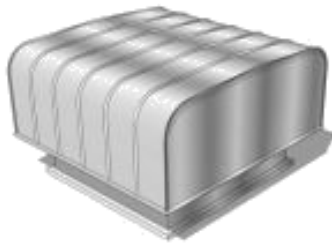


# Warranty

Product Part	Designed lifespan	Warranty
Metal Casing	20 Years	15 Years
Solar Panel	25 Years	15 Years
Brushless DC Motor	Over 10 Years	5 Years
AC/DC Power Adapter	8 Years	5 Years
Battery	8 Years	2 Years

\*The hereby lifespan & warranty terms are based on the product be used in regular environment, but not in those too humid or extreme condition places with acid and alkali corrosive gas / liquids.

## OEM your unique Solar Exhaust Fans:



Simply tell us your requirements, we'll help you to turn all kinds of regular electric industrial fans into cost-free solar exhaust fans!

### Let the sun pay all bills for you!



Sunny International Power Ltd  
Tel: 0086 750-6219188      Fax: 0750-6219198  
Email: [sales@sunnyintlpowerltd.com](mailto:sales@sunnyintlpowerltd.com)  
Website: [www.sunnyintlpowerltd.com](http://www.sunnyintlpowerltd.com)  
[www.sipl.en.Alibaba.com](http://www.sipl.en.Alibaba.com)

